

MECH FLOW SUPPLIES



Malleable Iron Pipe Fittings



Ductile Iron Grooved Fittings and Couplings



Valves



Cast Bronze Fittings



Electrical Power Fittings



Malleable Iron Pipe Clamps



Ductile Iron Pipe Fittings
Cast Iron Pipe Fittings



Pipe Nipples



Marketed and Distributed by:



Merit Fire & Power Piping System Pvt Ltd.
S01, Haware Centurion Complex, Sec 19A
Seawoods, Navi Mumbai - 400706



14" - 24" Grooved Fittings & Couplings

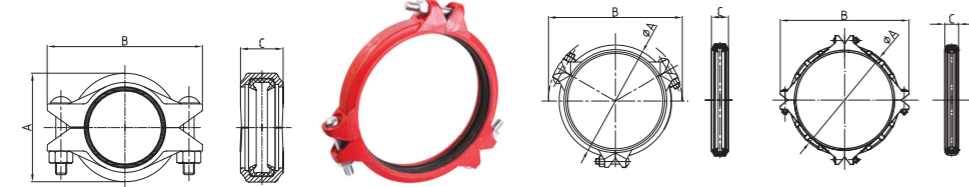
To Provide **Safe & Reliable** Products and **Smart & Complete** Solutions for Clients in Fluid Conveying Industry Across the Globe.



1N Standard Flexible Coupling



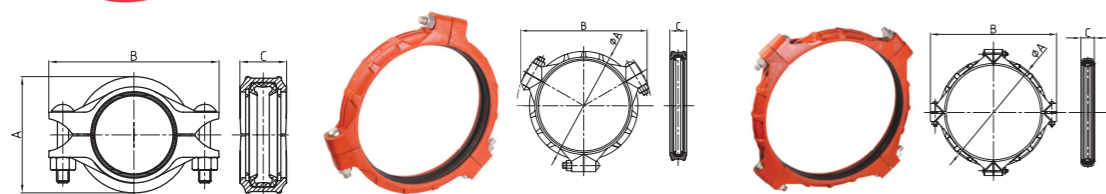
Nominal Size mm/in	Pipe O.D mm/in	Working Pressure PSI/MPa	Max. End Load kN/Lbs	Pipe End Separation mm/in	Dimensions			Bolt Size No.-Size mm
					A mm/in	B mm/in	C mm/in	
350 14	355.6 14.000	300 2.07	205.5/46220	0-3.2 0-0.13	402 15.83	493 19.41	72 2.83	3-7/8×140 3-M22×140
400 16	406.4 16.000	300 2.07	268.4/60370	0-3.2 0-0.13	458 18.03	547 21.54	72 2.85	3-7/8×140 3-M22×140
450 18	457.2 18.000	300 2.07	262.5/59060	0-3.2 0-0.13	505 19.88	598 23.54	78 3.07	3-7/8×140 4-M22×140
500 20	508.0 20.000	300 2.07	324.1/72910	0-3.2 0-0.13	550 21.65	648 25.51	78 3.07	4-7/8×140 4-M22×140
600 24	609.6 24.000	300 2.07	466.7/104990	0-3.2 0-0.13	662 26.06	774 30.47	78 3.07	4-1X140



1G Standard Rigid Coupling



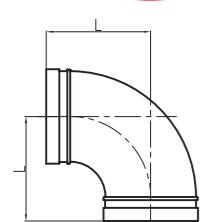
Nominal Size mm/in	Pipe O.D mm/in	Working Pressure PSI/MPa	Max. End Load kN/Lbs	Pipe End Separation mm/in	Dimensions			Bolt Size No.-Size mm
					A mm/in	B mm/in	C mm/in	
350 14	355.6 14.000	300 2.07	205.5/46220	0-3.2 0-0.13	415 16.34	510 20.08	72 2.84	3-7/8×140 3-M22×140
400 16	406.4 16.000	300 2.07	268.4/60370	0-3.2 0-0.13	468 18.43	575 22.64	72 2.84	3-7/8×140 3-M22×140
450 18	457.2 18.000	225 1.6	262.5/59060	0-3.2 0-0.13	508 20	608 23.94	78 3.07	3-7/8×140 3-M22×140
500 20	508.0 20.0	225 1.6	324.1/72910	0-3.2 0-0.13	563 22.17	660 25.98	78 3.07	4-7/8×140 4-M22×140
600 24	609.6 24.000	225 1.6	466.7/104990	0-3.2 0-0.13	668 26.30	772 30.40	78 3.07	4-1X140



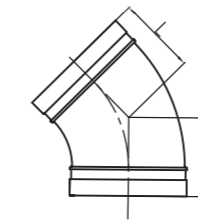
90 90° Elbow



Nominal Size mm/in	Pipe O.D mm/in	Working Pressure PSI/MPa	Dimensions L mm/in
350 14	355.6 14.000	300 2.07	280 11.02
400 16	406.4 16.000	300 2.07	305 12.00
450 18	457.2 18.000	300 2.07	394 15.50
500 20	508.0 20.000	300 2.07	438 17.25
600 24	609.6 24.000	300 2.07	508 20.00

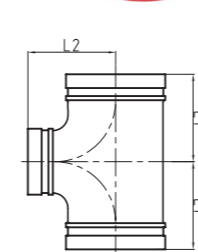


120 45° Elbow



Nominal Size mm/in	Pipe O.D mm/in	Working Pressure PSI/MPa	Dimensions L mm/in
350 14	355.6 14.000	300 2.07	152 6.00
400 16	406.4 16.000	300 2.07	184 7.25
450 18	457.2 18.000	300 2.07	203 8.00
500 20	508.0 20.000	300 2.07	229 9.00
600 24	609.6 24.000	300 2.07	280 11.00

130R Reducing Tee

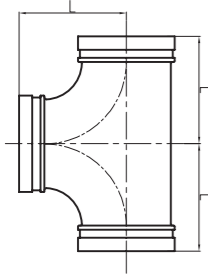


Nominal Size mm/in	Pipe O.D mm/in	Working Pressure PSI/MPa	Dimensions L 1 mm/in	Dimensions L 2 mm/in
350×150 14×6	355.6×168.3 14.000×6.625	300 2.07	279 10.98	238 9.37
350×250 14×10	355.6×273.0 14.000×10.750	300 2.07	279 10.98	257 10.12
350×300 14×12	355.6×323.9 14.000×12.750	300 2.07	279 10.98	270 10.63
400×150 16×6	406.4×168.3 16.000×6.625	300 2.07	305 12.01	264 10.39
400×200 16×8	406.4×219.1 16.000×8.625	300 2.07	305 12.01	273 10.75
400×250 16×10	406.4×273.0 16.000×10.750	300 2.07	305 12.01	283 11.14
400×300 16×12	406.4×323.9 16.000×12.750	300 2.07	305 12.01	295 11.61
400×350 16×14	406.4×355.6 16.000×14.000	300 2.07	305 12.01	305 12.01
450×150 18×6	457.2×168.3 18.000×6.625	300 2.07	343 13.50	298 11.73
450×200 18×8	457.2×219.1 18.000×8.625	300 2.07	343 13.50	298 11.73
450×250 18×10	457.2×273.0 18.000×10.750	300 2.07	343 13.50	308 12.13
450×300 18×12	457.2×323.9 18.000×12.750	300 2.07	343 13.50	321 12.64
450×350 18×14	457.2×355.6 18.000×14.000	300 2.07	343 13.50	330 12.99
450×400 18×16	457.2×406.4 18.000×16.000	300 2.07	343 13.50	330 12.99
500×150 20×6	508.0×168.3 20.000×6.625	300 2.07	381 15.00	324 12.76
500×200 20×8	508.0×219.1 20.000×8.625	300 2.07	381 15.00	324 12.76
500×250 20×10	508.0×273.0 20.000×10.750	300 2.07	381 15.00	333 13.11
500×300 20×12	508.0×323.9 20.000×12.750	300 2.07	381 15.00	346 13.62
500×350 20×14	508.0×355.6 20.000×14.000	300 2.07	381 15.00	356 14.02
500×400 20×16	508.0×406.4 20.000×16.000	300 2.07	381 15.00	356 14.02
500×450 20×18	508.0×457.2 20.000×18.000	300 2.07	381 15.00	368 14.49
600×150 24×6	609.6×168.3 24.000×6.625	300 2.07	432 17.01	384 15.12
600×200 24×8	609.6×219.1 24.000×8.625	300 2.07	432 17.01	384 15.12
600×250 24×10	609.6×273.0 24.000×10.750	300 2.07	432 17.01	384 15.12
600×300 24×12	609.6×323.9 24.000×12.750	300 2.07	432 17.01	397 15.63
600×350 24×14	609.6×355.6 24.000×14.000	300 2.07	432 17.01	406 15.98
600×400 24×16	609.6×406.4 24.000×16.000	300 2.07	432 17.01	406 15.98
600×450 24×18	609.6×457.2 24.000×18.000	300 2.07	432 17.01	419 16.50
600×500 24×20	609.6×508.0 24.000×20.000	300 2.07	432 17.01	432 17.01

Segmental sizes are made of carbon steel pipe or fabricated from wrought carbon steel. Contact manufacturer for details.

130

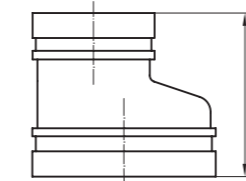
Tee



Nominal Size mm/in	Pipe O.D mm/in	Working Pressure PSI/MPa	Dimensions L mm/in
350 14	355.6 14.000	300 2.07	280 11.02
400 16	406.4 16.000	300 2.07	305 12.00
450 18	457.2 18.000	300 2.07	342 13.46
500 20	508.0 20.000	300 2.07	381 15.00
600 24	609.6 24.000	300 2.07	432 17.01

230

Grooved Eccentric Reducer

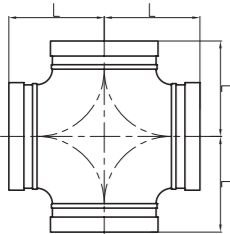


Nominal Size mm/in	Pipe O.D mm/in	Working Pressure PSI/MPa	Dimensions L mm/in
350X150 14X6	355.6X168.3 14.000X6.625	300 2.07	330 12.99
350X200 14X8	355.6X219.1 14.000X8.625	300 2.07	330 12.99
350X250 14X10	355.6X273.0 14.000X10.750	300 2.07	330 12.99
350X300 14X12	355.6X323.9 14.000X12.750	300 2.07	330 12.99
400X200 16X8	406.4X219.1 16.000X8.625	300 2.07	356 14.02
400X250 16X10	406.4X273.0 16.000X10.750	300 2.07	356 14.02
400X300 16X12	406.4X323.9 16.000X12.750	300 2.07	356 14.02
400X350 16X14	406.4X355.6 16.000X14.000	300 2.07	356 14.02
450X150 18X6	457.2X168.3 18.000X6.625	300 2.07	381 15.00
450X250 18X10	457.2X273.0 18.000X10.750	300 2.07	381 15.00
450X300 18X12	457.2X323.9 18.000X12.750	300 2.07	381 15.00
450X350 18X14	457.2X355.6 18.000X14.000	300 2.07	381 15.00
450X400 18X16	457.2X406.4 18.000X16.000	300 2.07	381 15.00
500X300 20X12	508.0X323.9 20.000X12.750	300 2.07	508 20.00
500X350 20X14	508.0X355.6 20.000X14.000	300 2.07	508 20.00
500X400 20X16	508.0X406.4 20.000X16.000	300 2.07	508 20.00
500X450 20X18	508.0X457.2 20.000X18.000	300 2.07	508 20.00
600X400 24X16	609.6X406.4 24.000X16.000	300 2.07	508 20.00
600X450 24X18	609.6X457.2 24.000X18.000	300 2.07	508 20.00
600X500 24X20	609.6X508.0 24.000X20.000	300 2.07	508 20.00

Segmental sizes are made of carbon steel pipe or fabricated from wrought carbon steel. Contact manufacturer for details.

180

Cross

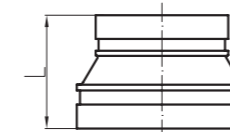


Nominal Size mm/in	Pipe O.D mm/in	Working Pressure PSI/MPa	Dimensions L mm/in
350 14	355.6 14.000	300 2.07	279 10.98
400 16	406.4 16.000	300 2.07	305 12.01
450 18	457.2 18.000	300 2.07	343 13.5
500 20	508.0 20.000	300 2.07	381 15.00
600 24	609.6 24.000	300 2.07	432 17.01

Segmental sizes are made of carbon steel pipe or fabricated from wrought carbon steel. Contact manufacturer for details.

240

Grooved Concentric Reducer



Nominal Size mm/in	Pipe O.D mm/in	Working Pressure PSI/MPa	Dimensions L mm/in
350X150 14X6	355.6X168.3 14.000X6.625	300 2.07	330 12.99
350X200 14X8	355.6X219.1 14.000X8.625	300 2.07	330 12.99
350X250 14X10	355.6X273.0 14.000X10.750	300 2.07	330 12.99
350X300 14X12	355.6X323.9 14.000X12.750	300 2.07	330 12.99
400X200 16X8	406.4X219.1 16.000X8.625	300 2.07	356 14.02
400X250 16X10	406.4X273.0 16.000X10.750	300 2.07	356 14.02
400X300 16X12	406.4X323.9 16.000X12.750	300 2.07	356 14.02
400X350 16X14	406.4X355.6 16.000X14.000	300 2.07	356 14.02
450X150 18X6	457.2X168.3 18.000X6.625	300 2.07	381 15.00
450X250 18X10	457.2X273.0 18.000X10.750	300 2.07	381 15.00
450X300 18X12	457.2X323.9 18.000X12.750	300 2.07	381 15.00
450X350 18X14	457.2X355.6 18.000X14.000	300 2.07	381 15.00
450X400 18X16	457.2X406.4 18.000X16.000	300 2.07	381 15.00
500X300 20X12	508.0X323.9 20.000X12.750	300 2.07	508 20.00
500X350 20X14	508.0X355.6 20.000X14.000	300 2.07	508 20.00
500X400 20X16	508.0X406.4 20.000X16.000	300 2.07	508 20.00
500X450 20X18	508.0X457.2 20.000X18.000	300 2.07	508 20.00
600X400 24X16	609.6X406.4 24.000X16.000	300 2.07	508 20.00
600X450 24X18	609.6X457.2 24.000X18.000	300 2.07	508 20.00
600X500 24X20	609.6X508.0 24.000X20.000	300 2.07	508 20.00

Segmental sizes are made of carbon steel pipe or fabricated from wrought carbon steel. Contact manufacturer for details.

300

Cap



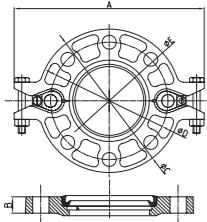
Nominal Size mm/in	Pipe O.D mm/in	Working Pressure PSI/MPa	Dimensions L mm/in
350	355.6	300	165
14	14.000	2.07	6.50
400	406.4	300	178
16	16.000	2.07	7.00
450	457.2	300	203
18	18.000	2.07	8.00
500	508.0	300	229
20	20.000	2.07	9.00
600	609.6	300	267
24	24.000	2.07	10.50

Segmental sizes are made of carbon steel pipe or fabricated from wrought carbon steel. Contact manufacturer for details.

321

PN16

Grooved Flange

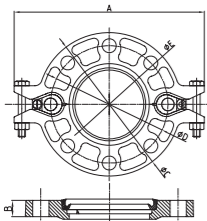


Nominal Size mm/in	Pipe O.D mm/in	Working Pressure PSI/MPa	Dimensions					Bolt/Nut	
			A mm/in	B mm/in	C mm/in	D mm/in	E mm/in	No.-SIZE mm	
350	355.6	300	580	30	520	470	350.6	—	16-M24
14	12.750	2.07	22.83	1.18	20.47	18.50	13.80	—	
400	406.4	300	630	32	580	525	401.5	—	16-M27
16	16.000	2.07	24.80	1.26	22.83	20.67	15.81	—	
450	457.2	300	693	36	640	585	452.2	—	20-M27
18	18.000	2.07	27.28	1.42	25.20	23.03	17.80	—	
500	508.0	300	770	36	715	650	503	—	20-M30
20	20.000	2.07	30.31	1.42	28.15	25.59	19.80	—	
600	609.6	300	895	40	840	770	601.6	—	20-M33
24	24.000	2.07	35.24	1.57	33.07	30.31	23.69	—	

321A

ANSI 125/150

Grooved Flange

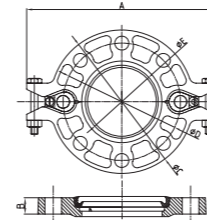


Nominal Size mm/in	Pipe O.D mm/in	Working Pressure PSI/MPa	Dimensions					Bolt/Nut	
			A mm/in	B mm/in	C mm/in	D mm/in	E mm/in	No.-SIZE mm	
350	355.6	300	590	37	535	476.3	350.6	—	12-1
14	12.750	2.0	23.22	1.44	21.00	18.75	13.80	—	
400	406.4	300	650	37	595	539.8	401.5	—	16-1
16	16.000	2.0	25.59	1.44	23.50	21.25	15.81	—	
450	457.2	300	690	40	635	577.8	452.2	—	16-11/8
18	18.000	2.0	27.17	1.56	25.80	22.75	17.80	—	
500	508.0	300	765	43	700	635	503	—	20-11/8
20	20.000	2.0	30.12	1.69	27.50	25.00	19.80	—	
600	609.6	300	875	49	815	749.3	601.6	—	20-11/4
24	24.000	2.0	34.45	1.94	32.00	29.50	23.69	—	

321E

BS TABLE 'E'

Grooved Flange

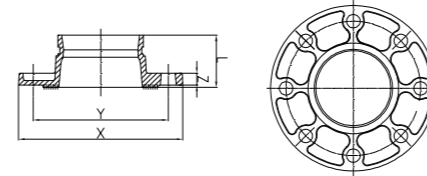


Nominal Size mm/in	Pipe O.D mm/in	Working Pressure PSI/MPa	Dimensions					Bolt/Nut	
			A mm/in	B mm/in	C mm/in	D mm/in	E mm/in	No.-SIZE mm	
350	355.6	200	580	32	527	470	350.6	—	12-7/8
14	12.750	1.4	22.83	1.26	20.75	18.50	13.80	—	
400	406.4	200	630	32	578	521	401.5	—	12-7/8
16	16.000	1.4	24.80	1.26	22.76	20.51	15.81	—	
450	457.2	200	693	36	641	584	452.2	—	16-7/8
18	18.000	1.4	27.28	1.42	25.24	23.00	17.80	—	
500	508.0	200	770	38	705	641	503	—	16-7/8
20	20.000	1.4	30.31	1.50	27.76	25.24	19.80	—	
600	609.6	200	880	42	826	756	601.6	—	16-11/8
24	24.000	1.4	34.65	1.65	32.52	29.76	23.69	—	

321G

PN16

Adaptor Flange

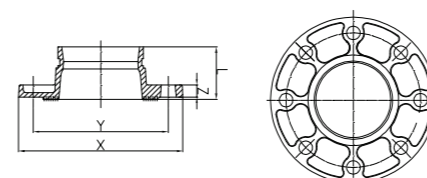


Nominal Size mm/in	Pipe O.D mm/in	Working Pressure PSI/MPa	Dimensions				Bolt/Nut	
			L mm/in	X mm/in	Y mm/in	Z mm/in	No.-SIZE mm	
350	377.0	225	100	520	470	25	—	16-M24
14	14.843	1.6	3.937	20.47	18.50	1.00	—	
400	426.0	225	110	580	525	27	—	16-M27
16	16.772	1.6	4.331	22.83	20.67	1.06	—	
450	480	225	115	640	585	20	—	20-M27
18	18.897	1.6	4.528	25.196	23.03	0.787	—	

321GA

ANSI 125/150

Adaptor Flange
Class 125/150



Nominal Size mm/in	Pipe O.D mm/in	Working Pressure PSI/MPa	Dimensions				Bolt/Nut	
			L mm/in	X mm/in	Y mm/in	Z mm/in	No.-SIZE mm	
350	355.6	300	127	535	476.3	37	—	12-1
14	12.750	2.0	5.00	21.00	18.75	1.44	—	
400	406.4	300	127	595	539.8	37	—	16-1
16	16.000	2.0	5.00	23.50	21.25	1.44	—	
450	457.2	300	140	642	577.8	40	—	16-11/8
18	18.000	2.0	5.50	25.28	22.75	1.56	—	
500	508.0	300	152	700	635	43	—	20-11/8
20	20.000	2.0	6.00	27.50	25.00	1.69	—	
600	609.6	300	152	815	749.3	49	—	20-11/4
24	24.000	2.0	6.00	32.00	29.50	1.94	—	